



**COLORADO**  
Department of Transportation

Division of Project Support  
Construction Engineering Services Branch

# Colorado Construction Cost (CCI) Index Report

## Calendar Year 2023 – Fourth Quarter

*Prepared for:*

Keith Stefanik, Chief Engineer

*Prepared by:*

Stephen Bokros, Manager  
Cost Estimating Services Unit  
Construction Engineering Services Branch  
Division of Project Support

## CCI Report Summary

### Fourth Quarter Ending December 31, 2023

|   |         |
|---|---------|
| Relative change from last quarter, quarterly data .....             | -5.35%* |
| Cumulative change from same quarter last year, quarterly data ..... | 2.61%*  |
| Relative change from last year, annual data** .....                 | 0.29%   |

\* Calculations based on quarterly data may vary significantly due to strong seasonality in Colorado.

\*\* Calculations derived from the most recent four consecutive quarters of data compared to the previous four consecutive quarters of data. For example, relative change for Second Quarter Ending June 30, 2017 is derived from July 1, 2016 to June 30, 2017 data compared to July 1, 2015 to June 30, 2016 data.

## Colorado Construction Cost Index Tabulations: Quarterly Data

| Year | Quarter | Earthwork     |            | Hot Mix Asphalt |              | Concrete Pavement* |            | Structural Concrete |           | Reinforcing Steel |              | Fisher Ideal Index |            |
|------|---------|---------------|------------|-----------------|--------------|--------------------|------------|---------------------|-----------|-------------------|--------------|--------------------|------------|
|      |         | Price (\$/CY) | Qty (CY)   | Price (\$/TON)  | Qty (TON)    | Price (\$/SY)      | Qty (SY)   | Price (\$/CY)       | Qty (CY)  | Price (\$/LB)     | Qty (LB)     | Relative           | Cumulative |
| 2012 | Q1      | 9.32          | 295,331.00 | 83.52           | 611,829.00   | 29.47              | 459,695.83 | 433.44              | 7,636.00  | 0.88              | 1,956,874.00 |                    | 1.0000     |
| 2012 | Q2      | 10.61         | 367,636.10 | 82.65           | 328,357.21   | 31.18              | 264,194.31 | 472.96              | 5,910.00  | 0.97              | 833,101.00   | 1.0190             | 1.0190     |
| 2012 | Q3      | 11.92         | 212,117.00 | 90.76           | 59,799.23    | 34.76              | 107,643.81 | 487.93              | 2,388.20  | 1.04              | 485,586.00   | 1.0995             | 1.1204     |
| 2012 | Q4      | 9.49          | 246,805.00 | 102.24          | 146,197.04   | n/a**              | n/a**      | 527.68              | 1,772.00  | 0.94              | 310,307.00   | 1.0344             | 1.1589     |
| 2013 | Q1      | 8.08          | 659,125.00 | 76.07           | 393,759.56   | 31.81              | 549,580.81 | 487.00              | 9,019.00  | 0.87              | 1,929,721.00 | 0.8044             | 0.9322     |
| 2013 | Q2      | 12.75         | 316,498.00 | 84.37           | 501,946.32   | 52.18              | 60,482.78  | 427.09              | 6,857.00  | 0.91              | 1,048,761.00 | 1.2121             | 1.1300     |
| 2013 | Q3      | 8.72          | 419,967.00 | 85.00           | 147,064.84   | 35.57              | 170,833.67 | 372.83              | 9,917.00  | 0.77              | 2,350,291.00 | 0.8947             | 1.0110     |
| 2013 | Q4      | 10.00         | 75,520.00  | 80.78           | 198,528.45   | 42.64              | 92,749.00  | 309.40              | 1,752.00  | 0.85              | 486,791.00   | 1.0086             | 1.0197     |
| 2014 | Q1      | 20.16         | 99,605.00  | 92.28           | 433,692.17   | 76.84              | 57,552.78  | 476.21              | 3,265.00  | 0.98              | 629,246.00   | 1.2581             | 1.2829     |
| 2014 | Q2      | 12.88         | 610,731.00 | 88.13           | 548,253.70   | 34.34              | 302,520.17 | 517.01              | 8,249.90  | 0.90              | 1,468,195.00 | 0.8421             | 1.0803     |
| 2014 | Q3      | 13.30         | 708,794.00 | 100.07          | 102,680.99   | 52.39              | 147,911.17 | 592.26              | 16,294.30 | 1.01              | 2,949,114.00 | 1.1740             | 1.2683     |
| 2014 | Q4      | 10.73         | 695,288.00 | 113.42          | 141,154.23   | 46.12              | 156,635.11 | 549.86              | 6,657.10  | 1.03              | 948,029.00   | 0.9591             | 1.2164     |
| 2015 | Q1      | 16.60         | 301,494.80 | 83.80           | 736,968.84   | 34.36              | 311,378.67 | 744.81              | 1,994.30  | 1.66              | 368,665.00   | 0.8798             | 1.0702     |
| 2015 | Q2      | 15.12         | 167,066.00 | 94.22           | 311,989.59   | 46.36              | 219,498.00 | 577.73              | 1,119.00  | 1.64              | 205,245.00   | 1.1391             | 1.2190     |
| 2015 | Q3      | 20.32         | 40,649.00  | 98.61           | 89,024.05    | 75.70              | 12,880.78  | 739.20              | 706.90    | 1.33              | 86,854.00    | 1.1536             | 1.4063     |
| 2015 | Q4      | 12.16         | 309,414.10 | 81.21           | 66,957.40    | 47.46              | 128,174.06 | 598.73              | 3,702.00  | 1.42              | 366,651.00   | 0.7434             | 1.0454     |
| 2016 | Q1      | 12.27         | 939,477.00 | 84.03           | 1,078,315.35 | 39.18              | 243,518.78 | 617.10              | 6,507.71  | 1.02              | 1,627,487.00 | 0.9767             | 1.0211     |
| 2016 | Q2      | 31.34         | 14,104.00  | 110.17          | 118,434.28   | 104.99             | 1,936.89   | 1,028.57            | 126.00    | 2.79              | 12,189.00    | 1.4571             | 1.4878     |
| 2016 | Q3      | 10.66         | 503,305.00 | 83.55           | 286,987.61   | 52.59              | 275,462.06 | 606.80              | 1,952.80  | 0.94              | 331,788.70   | 0.6500             | 0.9671     |
| 2016 | Q4      | 18.00         | 81,788.00  | 106.93          | 108,909.09   | 47.97              | 51,601.89  | 978.88              | 300.80    | 2.28              | 18,840.00    | 1.2318             | 1.1913     |
| 2017 | Q1      | 24.99         | 110,497.40 | 82.20           | 480,758.14   | 36.08              | 60,069.44  | 1,138.99            | 67.00     | 2.17              | 26,054.00    | 0.8105             | 0.9655     |
| 2017 | Q2      | 11.28         | 153,010.00 | 88.48           | 302,427.67   | 36.44              | 147,787.36 | 592.94              | 2,168.00  | 1.06              | 416,630.00   | 0.9916             | 0.9574     |
| 2017 | Q3      | 27.34         | 51,552.00  | 115.01          | 19,675.64    | 97.88              | 2,088.89   | 629.83              | 2,292.00  | 1.15              | 346,069.00   | 1.4673             | 1.4048     |
| 2017 | Q4      | 16.17         | 23,686.00  | 95.90           | 152,110.33   | 72.95              | 2,823.00   | 1,068.73            | 263.00    | 2.32              | 24,850.00    | 0.9449             | 1.3274     |
| 2018 | Q1      | 13.97         | 163,772.00 | 90.91           | 302,427.23   | 92.58              | 7,834.00   | 862.30              | 1,167.00  | 1.39              | 206,568.00   | 0.9415             | 1.2497     |
| 2018 | Q2      | 15.58         | 47,167.00  | 110.11          | 42,157.74    | n/a**              | n/a**      | 809.61              | 887.00    | 1.54              | 139,494.00   | 1.1643             | 1.4551     |
| 2018 | Q3      | 15.69         | 77,482.00  | 107.51          | 38,587.91    | 60.91              | 11,825.11  | 711.51              | 5,097.00  | 1.07              | 1,480,110.00 | 0.8995             | 1.3088     |
| 2018 | Q4      | 16.51         | 174,175.00 | 89.89           | 594,326.44   | 35.97              | 974,214.00 | 674.59              | 2,017.00  | 1.29              | 213,561.00   | 0.8238             | 1.0785     |
| 2019 | Q1      | 12.73         | 545,088.00 | 101.34          | 491,723.60   | 53.33              | 197,389.61 | 840.94              | 4,426.90  | 1.40              | 871,380.00   | 1.1848             | 1.2778     |
| 2019 | Q2      | 26.64         | 55,197.00  | 119.73          | 116,528.65   | 79.43              | 13,611.17  | 479.34              | 8,463.00  | 1.05              | 1,230,972.00 | 1.1236             | 1.4357     |
| 2019 | Q3      | n/a**         | n/a**      | n/a**           | n/a**        | 104.00             | 4,074.22   | n/a**               | n/a**     | n/a**             | n/a**        | 1.0100             | 1.4501     |
| 2019 | Q4      | 16.30         | 207,333.00 | 95.42           | 275,273.38   | 43.76              | 41,068.89  | 798.39              | 468.00    | 1.39              | 149,577.00   | 0.8508             | 1.2337     |
| 2020 | Q1      | 20.76         | 456,146.00 | 93.02           | 867,587.63   | 62.82              | 53,818.89  | 805.97              | 4,026.00  | 1.22              | 820,456.00   | 1.0204             | 1.2589     |
| 2020 | Q2      | 9.86          | 764,455.00 | 104.16          | 156,927.56   | 51.27              | 177,038.39 | 809.92              | 1,804.90  | 1.43              | 363,737.00   | 0.9156             | 1.1527     |
| 2020 | Q3      | 18.41         | 38,940.00  | 119.00          | 26,251.98    | 46.08              | 108,008.22 | 874.51              | 829.50    | 1.35              | 142,067.00   | 1.1208             | 1.2920     |
| 2020 | Q4      | 7.97          | 236,919.00 | 103.21          | 204,957.94   | 118.13             | 129.78     | 663.99              | 1,372.40  | 1.50              | 170,603.00   | 1.1677             | 1.5087     |
| 2021 | Q1      | 29.41         | 70,042.00  | 86.42           | 717,198.89   | 75.43              | 38,520.44  | 776.10              | 1,205.40  | 1.44              | 193,123.00   | 0.9550             | 1.4408     |
| 2021 | Q2      | 15.43         | 336,448.00 | 90.69           | 153,802.91   | 61.18              | 44,898.56  | 988.80              | 2,639.00  | 1.61              | 431,045.00   | 0.9405             | 1.3550     |
| 2021 | Q3      | 15.10         | 614,822.00 | 104.66          | 60,911.11    | 83.54              | 7,714.89   | 879.03              | 2,306.00  | 1.51              | 302,787.00   | 1.0677             | 1.4467     |
| 2021 | Q4      | 18.77         | 279,454.00 | 114.06          | 772,464.56   | 49.21              | 107,696.78 | 733.07              | 1,857.40  | 1.52              | 409,460.00   | 1.0811             | 1.5641     |
| 2022 | Q1      | 21.51         | 158,601.00 | 118.27          | 377,371.40   | 66.87              | 79,738.72  | 1,027.78            | 1,812.50  | 1.60              | 537,299.00   | 1.0708             | 1.6748     |
| 2022 | Q2      | 21.07         | 368,073.00 | 119.68          | 350,768.54   | 61.64              | 75,600.89  | 936.83              | 1,583.60  | 1.60              | 570,628.00   | 0.9971             | 1.6700     |
| 2022 | Q3      | 27.51         | 212,003.00 | 188.25          | 29,884.24    | 88.39              | 8,176.00   | 1,214.56            | 3,082.70  | 2.43              | 766,514.00   | 1.4597             | 2.4377     |
| 2022 | Q4      | 28.25         | 390,484.00 | 133.85          | 653,275.51   | 100.75             | 10,902.00  | 969.78              | 9,549.00  | 1.99              | 2,502,608.00 | 0.8024             | 1.9559     |
| 2023 | Q1      | 27.03         | 61,005.00  | 126.73          | 238,040.15   | 100.75             | 10,902.00  | 969.78              | 9,549.00  | 2.16              | 10,645.00    | 0.9592             | 1.8761     |
| 2023 | Q2      | 35.41         | 62,225.00  | 141.34          | 129,616.77   | 100.75             | 10,902.00  | 1,171.30            | 3,770.00  | 1.95              | 153,583.00   | 1.1378             | 2.1346     |
| 2023 | Q3      | 27.74         | 46,034.00  | 147.68          | 82,792.32    | 84.77              | 51,409.44  | 1,195.41            | 5,832.00  | 1.85              | 1,109,315.00 | 0.9933             | 2.1204     |
| 2023 | Q4      | 32.05         | 130,828.00 | 128.90          | 706,131.09   | 84.77              | 51,409.44  | 1,287.29            | 7,025.00  | 2.44              | 205,353.00   | 0.95               | 2.01       |

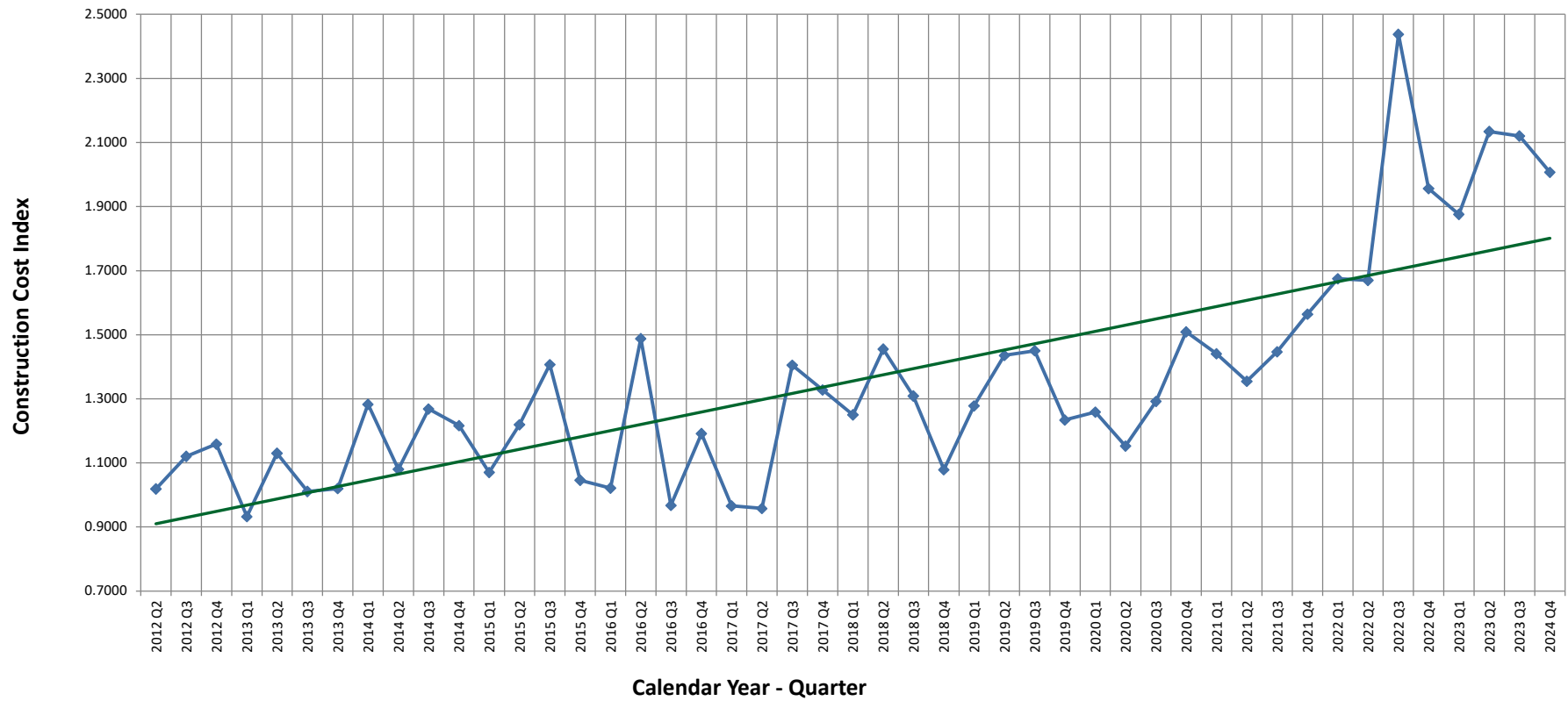
Weighted average prices and quantities are calculated after outliers (< 5% and > 95%) are removed in the preceding 7 years for a given quarter.

\* Concrete Pavement is normalized to 9 inches thick.

\*\* Assuming same price and quantity as previous quarter for index calculations, due to insufficient data of this sub group.

## Colorado CCI - Quarterly Data, Cumulative Assuming 2012 Q1 = 1.0000

Quarterly Trendline: Annual Percentage = 7.75%



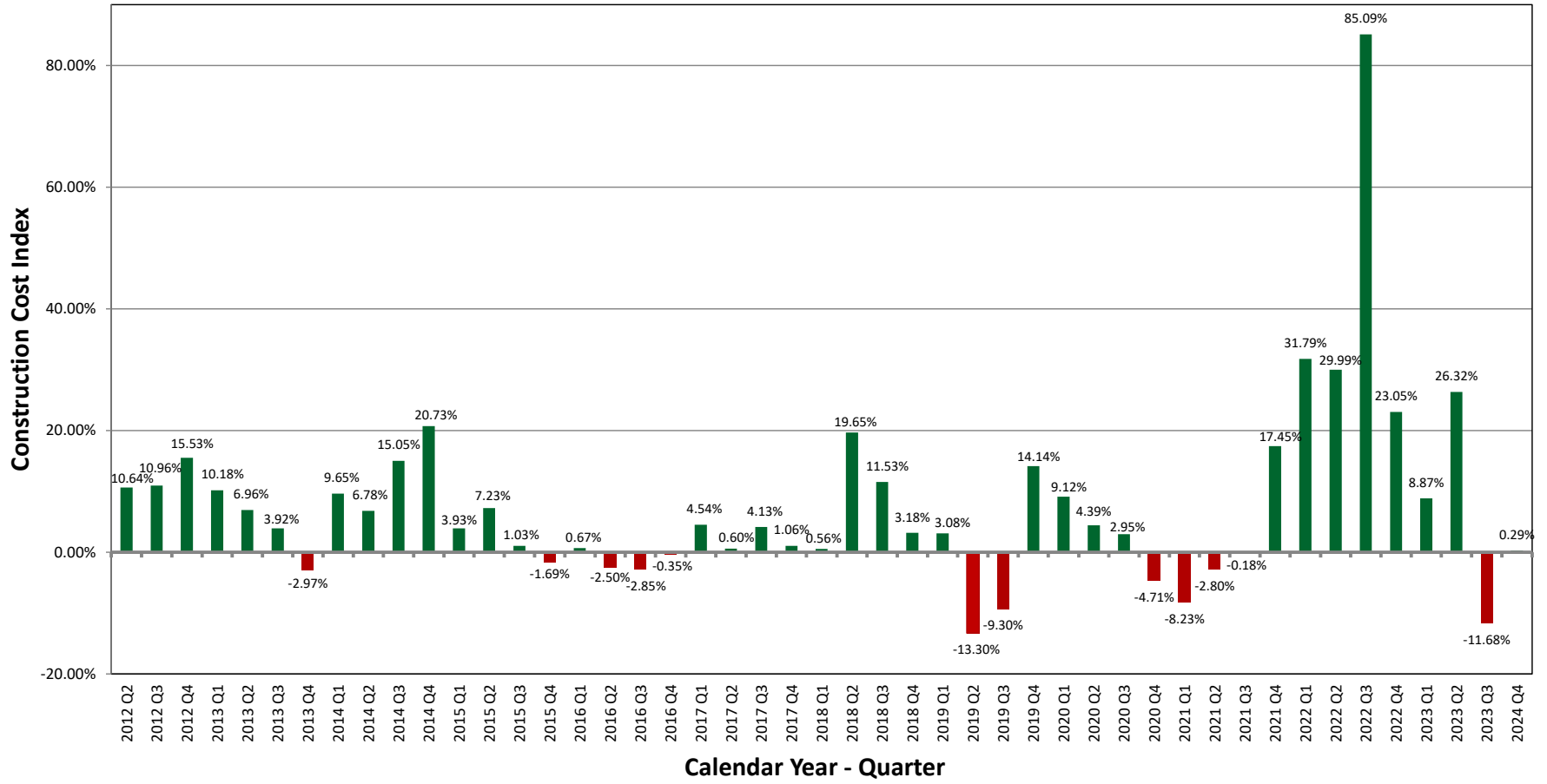
Colorado Construction Cost Index Tabulations: Annual Percentage Change

| Year | Quarter | Earthwork     |              | Hot Mix Asphalt |              | Concrete Pavement* |              | Structural Concrete |            | Reinforcing Steel |              | Fisher Ideal Index (Annual Change) |         |         |        |
|------|---------|---------------|--------------|-----------------|--------------|--------------------|--------------|---------------------|------------|-------------------|--------------|------------------------------------|---------|---------|--------|
|      |         | Price (\$/CY) | Qty (CY)     | Price (\$/TON)  | Qty (TON)    | Price (\$/SY)      | Qty (SY)     | Price (\$/CY)       | Qty (CY)   | Price (\$/LB)     | Qty (LB)     | Q1                                 | Q2      | Q3      | Q4     |
| 2012 | Q1      | 8.54          | 1,643,084.00 | 83.57           | 1,241,881.88 | 31.36              | 667,746.33   | 425.94              | 719,256.60 | 0.86              | 7,149,441.00 | 15.75%                             | -       | -       | -      |
| 2012 | Q2      | 9.14          | 1,480,770.10 | 85.60           | 1,177,201.54 | 30.19              | 816,996.14   | 443.73              | 482,553.33 | 0.90              | 4,772,516.00 | -                                  | 10.64%  | -       | -      |
| 2012 | Q3      | 9.26          | 1,540,869.10 | 85.79           | 1,121,413.82 | 31.08              | 843,324.44   | 453.18              | 246,336.20 | 0.91              | 4,774,608.00 | -                                  | -       | 10.96%  | -      |
| 2012 | Q4      | 10.28         | 1,123,054.10 | 86.44           | 1,075,973.36 | 30.75              | 832,137.83   | 461.30              | 231,142.60 | 0.93              | 3,571,733.00 | -                                  | -       | -       | 15.53% |
| 2013 | Q1      | 9.06          | 1,640,490.10 | 81.96           | 917,016.69   | 32.04              | 921,360.25   | 486.13              | 171,271.80 | 0.92              | 3,544,580.00 | 10.18%                             | -       | -       | -      |
| 2013 | Q2      | 9.43          | 1,589,152.00 | 83.62           | 1,091,967.52 | 34.03              | 717,397.39   | 469.76              | 439,498.40 | 0.90              | 3,760,240.00 | -                                  | 6.96%   | -       | -      |
| 2013 | Q3      | 8.97          | 1,797,152.00 | 83.46           | 1,179,429.29 | 34.27              | 780,587.25   | 433.64              | 110,260.00 | 0.84              | 5,637,961.00 | -                                  | -       | 3.92%   | -      |
| 2013 | Q4      | 8.94          | 1,624,766.00 | 81.91           | 1,233,105.61 | 35.13              | 872,983.69   | 419.68              | 82,635.00  | 0.83              | 5,815,564.00 | -                                  | -       | -       | -2.97% |
| 2014 | Q1      | 11.48         | 911,590.00   | 87.61           | 1,263,123.94 | 46.14              | 381,618.22   | 400.29              | 348,656.00 | 0.84              | 4,515,089.00 | 9.65%                              | -       | -       | -      |
| 2014 | Q2      | 11.85         | 1,205,823.00 | 87.98           | 1,303,383.13 | 39.83              | 623,655.61   | 433.90              | 417,310.20 | 0.84              | 4,934,523.00 | -                                  | 6.78%   | -       | -      |
| 2014 | Q3      | 13.42         | 1,494,650.00 | 89.33           | 1,258,855.88 | 44.14              | 600,788.11   | 541.68              | 916,397.20 | 0.96              | 5,533,272.00 | -                                  | -       | 15.05%  | -      |
| 2014 | Q4      | 12.87         | 1,905,718.00 | 93.84           | 1,194,508.19 | 45.71              | 535,731.67   | 552.98              | 445,708.90 | 0.98              | 5,959,513.00 | -                                  | -       | -       | 20.73% |
| 2015 | Q1      | 13.05         | 2,107,558.80 | 89.29           | 1,505,930.18 | 38.96              | 789,770.89   | 573.93              | 628,474.40 | 1.02              | 5,704,023.00 | 3.93%                              | -       | -       | -      |
| 2015 | Q2      | 13.33         | 1,663,898.80 | 91.88           | 1,278,350.68 | 43.24              | 706,748.72   | 592.19              | 129,733.50 | 1.09              | 4,441,073.00 | -                                  | 7.23%   | -       | -      |
| 2015 | Q3      | 13.63         | 995,753.80   | 91.69           | 1,264,591.17 | 41.62              | 571,919.33   | 582.12              | 20,378.60  | 1.26              | 1,575,781.00 | -                                  | -       | 1.03%   | -      |
| 2015 | Q4      | 14.79         | 818,579.90   | 88.28           | 1,197,470.58 | 41.60              | 672,400.83   | 622.80              | 51,661.40  | 1.54              | 1,029,400.00 | -                                  | -       | -       | -1.69% |
| 2016 | Q1      | 12.76         | 1,464,883.10 | 87.31           | 1,536,858.49 | 44.35              | 604,327.61   | 584.07              | 257,855.82 | 1.14              | 2,283,131.00 | 0.67%                              | -       | -       | -      |
| 2016 | Q2      | 12.65         | 1,311,916.10 | 87.76           | 1,343,198.17 | 43.44              | 386,502.72   | 589.95              | 21,455.62  | 1.10              | 2,088,744.00 | -                                  | -2.50%  | -       | -      |
| 2016 | Q3      | 11.90         | 1,774,241.10 | 86.35           | 1,540,764.97 | 46.66              | 648,828.00   | 600.27              | 109,230.39 | 1.08              | 2,336,431.70 | -                                  | -       | -2.85%  | -      |
| 2016 | Q4      | 12.11         | 1,546,589.00 | 88.15           | 1,579,665.43 | 46.60              | 572,255.83   | 614.48              | 43,736.55  | 1.02              | 1,988,525.70 | -                                  | -       | -       | -0.35% |
| 2017 | Q1      | 13.86         | 707,879.40   | 89.72           | 982,654.73   | 51.86              | 403,163.94   | 671.29              | 4,832.00   | 1.14              | 387,092.70   | 4.54%                              | -       | -       | -      |
| 2017 | Q2      | 13.10         | 846,760.40   | 87.35           | 1,166,127.13 | 47.43              | 548,620.42   | 623.09              | 35,667.20  | 1.08              | 792,864.70   | -                                  | 0.60%   | -       | -      |
| 2017 | Q3      | 18.01         | 394,566.40   | 89.14           | 899,330.24   | 42.66              | 275,247.25   | 634.52              | 24,023.00  | 1.16              | 807,026.00   | -                                  | -       | 4.13%   | -      |
| 2017 | Q4      | 17.96         | 335,196.40   | 87.05           | 969,483.05   | 41.83              | 226,468.36   | 644.35              | 28,740.00  | 1.17              | 813,026.00   | -                                  | -       | -       | 1.06%  |
| 2018 | Q1      | 14.50         | 389,889.00   | 89.19           | 827,260.46   | 39.65              | 159,163.97   | 678.88              | 58,760.00  | 1.17              | 988,218.00   | 0.56%                              | -       | -       | -      |
| 2018 | Q2      | 16.44         | 342,507.00   | 89.03           | 607,596.81   | 85.48              | 12,034.39    | 746.16              | 25,415.00  | 1.29              | 792,847.00   | -                                  | 19.65%  | -       | -      |
| 2018 | Q3      | 14.80         | 368,871.00   | 89.18           | 626,447.65   | 70.50              | 21,592.61    | 747.97              | 85,976.00  | 1.14              | 1,925,915.00 | -                                  | -       | 11.53%  | -      |
| 2018 | Q4      | 15.46         | 520,654.00   | 89.21           | 1,047,318.74 | 36.62              | 992,983.61   | 723.69              | 95,700.00  | 1.15              | 2,114,731.00 | -                                  | -       | -       | 3.18%  |
| 2019 | Q1      | 14.08         | 902,010.00   | 94.81           | 1,206,169.09 | 39.10              | 1,183,250.72 | 752.85              | 231,190.20 | 1.21              | 2,784,865.00 | 3.08%                              | -       | -       | -      |
| 2019 | Q2      | 14.64         | 851,604.00   | 97.70           | 1,240,977.52 | 39.56              | 1,196,861.89 | 634.01              | 139,523.30 | 1.15              | 3,794,578.00 | -                                  | -13.30% | -       | -      |
| 2019 | Q3      | 15.25         | 1,153,471.00 | 93.10           | 1,488,059.22 | 39.84              | 1,193,589.00 | 621.84              | 202,577.40 | 1.18              | 5,583,068.00 | -                                  | -       | -9.30%  | -      |
| 2019 | Q4      | 15.25         | 1,186,629.00 | 95.28           | 1,169,006.16 | 54.92              | 260,443.89   | 621.10              | 128,855.60 | 1.18              | 5,519,084.00 | -                                  | -       | -       | 14.14% |
| 2020 | Q1      | 18.80         | 1,097,687.00 | 92.08           | 1,544,870.18 | 61.24              | 116,873.17   | 613.90              | 222,691.00 | 1.16              | 5,468,160.00 | 9.12%                              | -       | -       | -      |
| 2020 | Q2      | 14.30         | 1,428,945.00 | 94.94           | 1,301,967.57 | 53.19              | 276,000.39   | 806.51              | 44,099.30  | 1.29              | 1,333,770.00 | -                                  | 4.39%   | -       | -      |
| 2020 | Q3      | 14.39         | 1,466,874.00 | 95.35           | 1,326,040.54 | 50.62              | 379,934.39   | 814.45              | 42,770.40  | 1.30              | 1,475,837.00 | -                                  | -       | 2.95%   | -      |
| 2020 | Q4      | 13.11         | 1,496,460.00 | 96.62           | 1,255,725.10 | 51.48              | 338,995.28   | 789.68              | 48,196.80  | 1.31              | 1,496,863.00 | -                                  | -       | -       | -4.71% |
| 2021 | Q1      | 10.99         | 1,110,356.00 | 92.83           | 1,105,336.37 | 52.44              | 323,696.83   | 773.95              | 41,697.60  | 1.43              | 869,530.00   | -8.23%                             | -       | -       | -      |
| 2021 | Q2      | 14.45         | 682,349.00   | 90.91           | 1,102,211.72 | 55.57              | 191,557.00   | 856.99              | 60,463.00  | 1.52              | 936,838.00   | -                                  | -2.80%  | -       | -      |
| 2021 | Q3      | 14.64         | 1,258,231.00 | 91.00           | 1,136,870.85 | 69.17              | 91,263.67    | 861.81              | 37,614.00  | 1.54              | 1,097,558.00 | -                                  | -       | -0.18%  | -      |
| 2021 | Q4      | 16.74         | 1,300,766.00 | 99.98           | 1,704,377.47 | 58.33              | 198,830.67   | 865.86              | 32,031.20  | 1.54              | 1,336,415.00 | -                                  | -       | -       | 17.45% |
| 2022 | Q1      | 16.69         | 1,391,205.00 | 112.57          | 1,394,922.03 | 61.12              | 276,289.17   | 912.48              | 34,459.60  | 1.56              | 1,744,736.00 | 31.79%                             | -       | -       | -      |
| 2022 | Q2      | 18.12         | 1,422,830.00 | 116.25          | 1,591,887.66 | 61.24              | 306,991.50   | 890.94              | 37,797.50  | 1.56              | 1,884,319.00 | -                                  | 29.99%  | -       | -      |
| 2022 | Q3      | 21.90         | 1,020,011.00 | 118.08          | 1,560,860.79 | 61.40              | 307,452.61   | 1013.91             | 58,353.40  | 1.85              | 2,348,046.00 | -                                  | -       | 85.09%  | -      |
| 2022 | Q4      | 24.87         | 1,131,041.00 | 127.38          | 1,441,671.74 | 69.67              | 210,657.83   | 1020.16             | 256,444.80 | 1.96              | 4,441,194.00 | -                                  | -       | -       | 20.32% |
| 2023 | Q1      | 25.47         | 1,031,565.00 | 129.89          | 1,271,968.44 | 68.45              | 94,678.89    | 1020.16             | 256,444.80 | 2.16              | 10,645.00    | 8.87%                              | -       | -       | -      |
| 2023 | Q2      | 28.55         | 725,717.00   | 134.71          | 1,050,816.67 | 95.46              | 19,078.00    | 1047.93             | 29,033.40  | 2.09              | 3,433,350.00 | -                                  | -       | 26.32%  | -      |
| 2023 | Q3      | 28.87         | 559,748.00   | 134.23          | 1,103,724.74 | 87.57              | 62,311.44    | 1067.99             | 69,064.00  | 1.95              | 3,776,151.00 | -                                  | -       | -11.68% | -      |
| 2023 | Q4      | 31.07         | 300,092.00   | 131.19          | 1,156,580.33 | 84.77              | 51,409.44    | 1204.58             | 45,610.00  | 1.94              | 1,478,896.00 | -                                  | -       | -       | 0.29%  |

Weighted average prices and quantities are calculated after outliers (< 5% and > 95%) are removed in the preceding 7 years for a given quarter.

\* Concrete Pavement is normalized to 9 inches thick.

## Colorado CCI - Annual Percentage Change



Calculations derived from the most recent four consecutive quarters of data compared to the previous four consecutive quarters of data.

**Comments:**

The methodology for preparing the CCI is documented in a brief report attached to the '2012 CCI Q2 (Quarter Two)' report at the link below under the 'Construction Cost Index' heading and '2012 CCI Q2' report (<https://www.codot.gov/business/eema/constructioncostindex>).

Starting with 2016 Q3, this quarterly CCI report includes calculations based on annual data. The annual data calculations are less volatile than the quarterly data calculations, partially due to the strong seasonal nature of transportation construction in Colorado.

For the current quarter, price changes for the five subgroups, as shown in the 'Colorado Construction Cost Index Tabulations: Quarterly Data', are listed as follows:

**Earthwork (Excavation and Embankment):**

The average price was \$32.05/CY (cubic yard), which is up \$4.31 CY, with 284.20% of the quantity, from the previous quarter.

**Hot Mix Asphalt:**

The average price was \$128.90/Ton, which is down -\$18.78/TON, with 852.89% of the quantity, from the previous quarter.

**Concrete Pavement:**

The average price was \$84.77/SY (square yard), which did not change, with 100.00% of the quantity, from the previous quarter.

**Structural Concrete:**

The average price was \$1,287.29/CY, which is up \$91.87 SY, with 120.469% of the quantity, from the previous quarter.

**Reinforcing Steel:**

The average price was \$2.44/LB (pound), which is up \$0.59, with 18.51% the quantity, from the previous quarter.

**Additional Information:**

This quarter, based on preceding quarterly data, three subgroups, Earthwork, Structural Concrete and Reinforcing Steel, showed an increase in price. While Hot Mix Asphalt showed a decrease in price and Concrete Pavement did not change. 41 Design-Bid-Build projects for a total of \$420,726,700.57 were bid and awarded this quarter. The five categories for CCI items totaled \$421,664,689.57, which is 4.27% of the total Design-Bid-Build awarded amount. Last quarter, by comparison, had 41 Design-Bid-Build projects bid and awarded.

**Projects Awarded This Quarter and Not Used in the CCI Calculations**

| Project Type                                 | Number of Projects | Biddable Items Total Amount |
|--|--------------------|-----------------------------|
| Design-Build                                 | 41                 | \$420,726,700.57            |
| Hybrid / Modified / Streamlined Design-Build | 0                  | \$0.00                      |
| Construction Manager / General Contractor    | 0                  | \$0.00                      |
| Emergency                                    | 1                  | \$1,797,978.00              |
| Sub Total                                    | 42                 | \$421,664,689.57            |